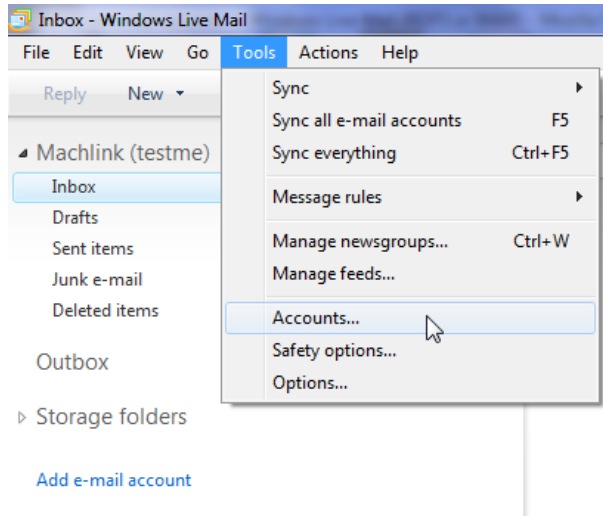
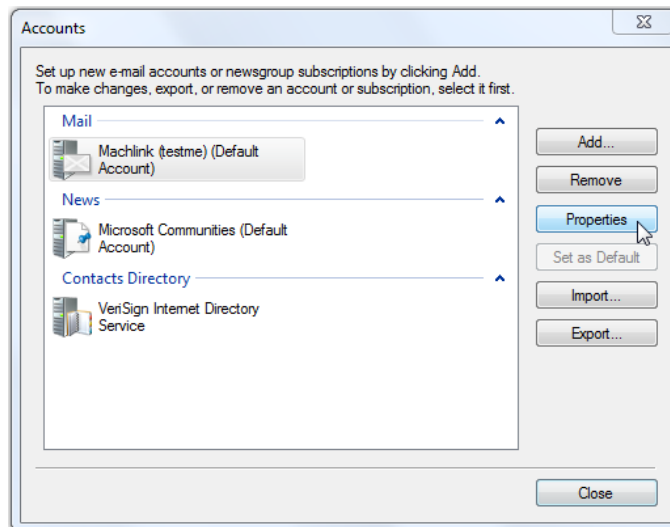


Windows Live Mail IMAP Modification

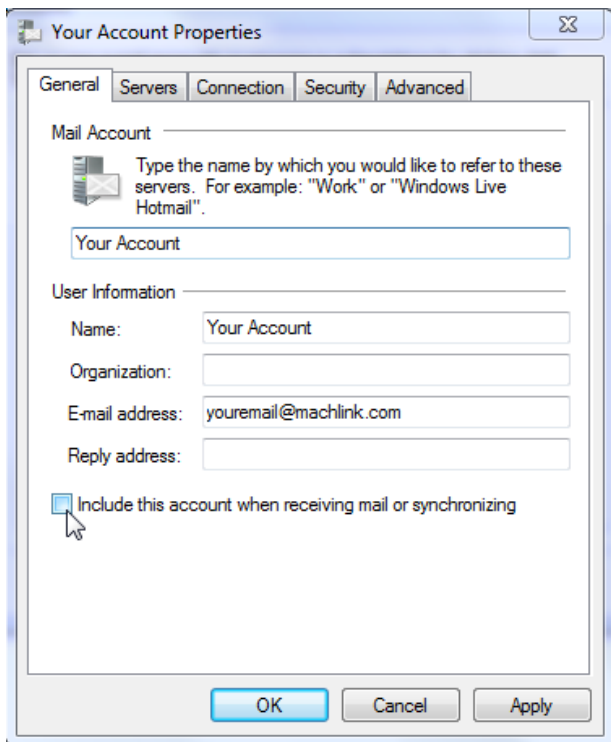
1. From the **Tools** menu, select **Accounts**



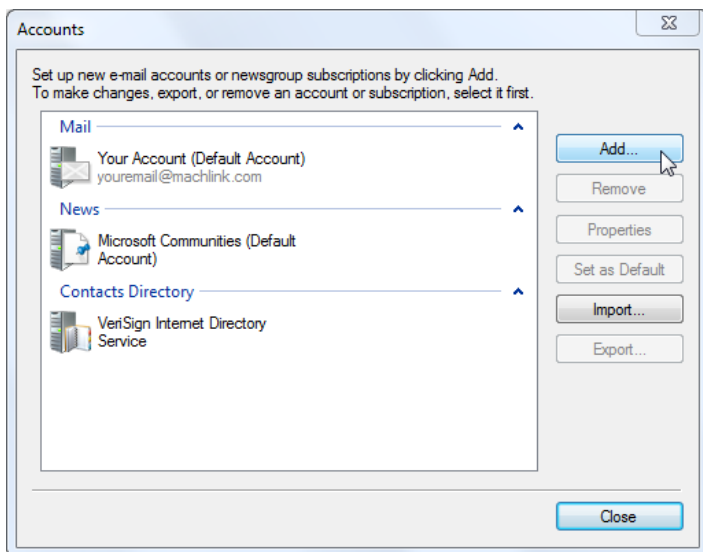
2. Highlight **mail.machlink.com** then click **Properties**



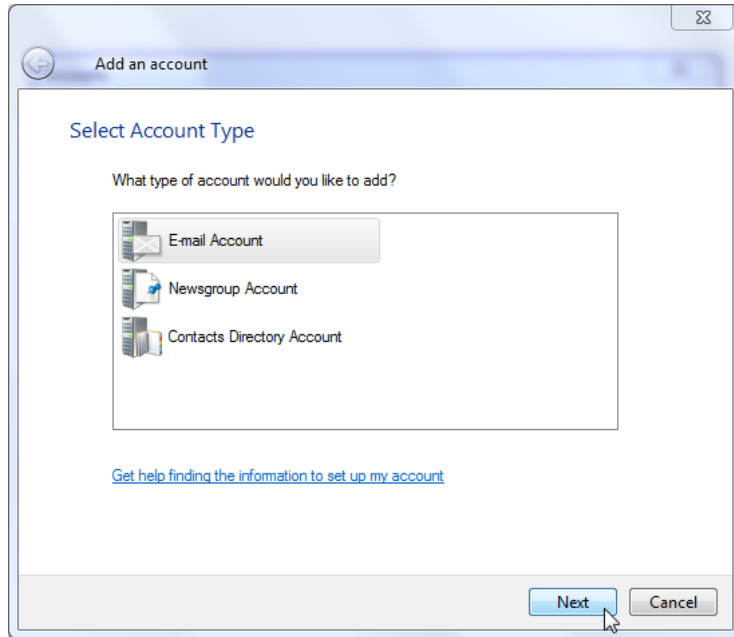
3. Uncheck the box next to “Include this account when receiving mail or synchronizing” and click **Apply** then **OK**



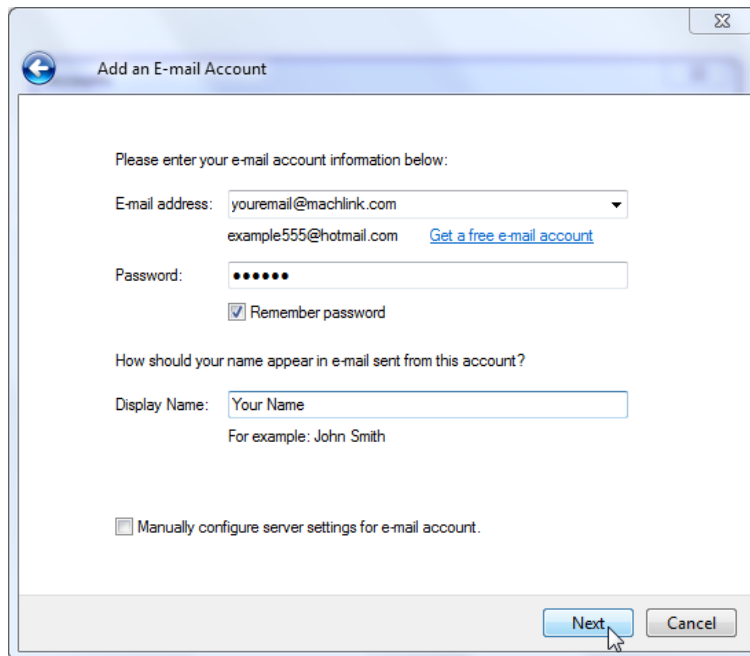
4. In order to add the new account, click **Add...**



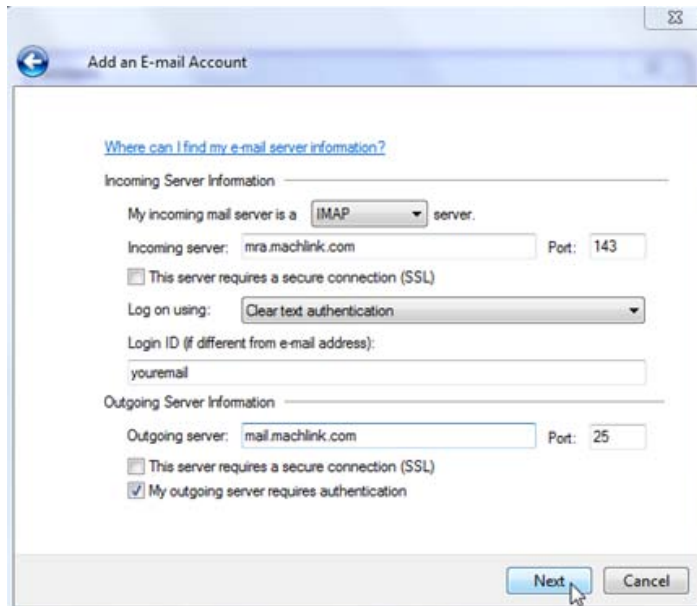
5. Highlight **E-mail Account** then click **Next**



6. Enter your **E-mail address**, **Password**, and your **Display Name** (as you would like to appear in your e-mail) then click **Next**

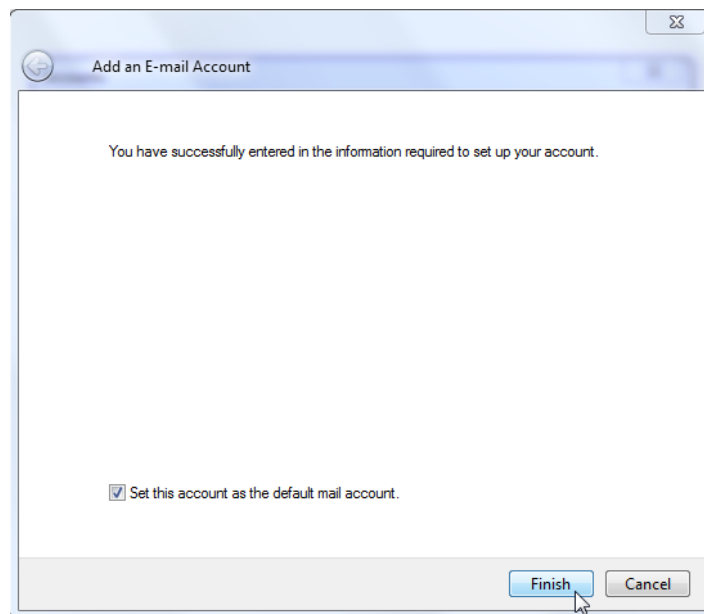


7. Enter Server Information as shown below
 1. **Incoming e-mail server type:** - IMAP
 2. **Incoming server:** mra.machlink.com
 3. **Outgoing server:** mail.machlink.com
 4. Place a checkmark beside **My Outgoing server requires authentication**
 5. Click **Next**



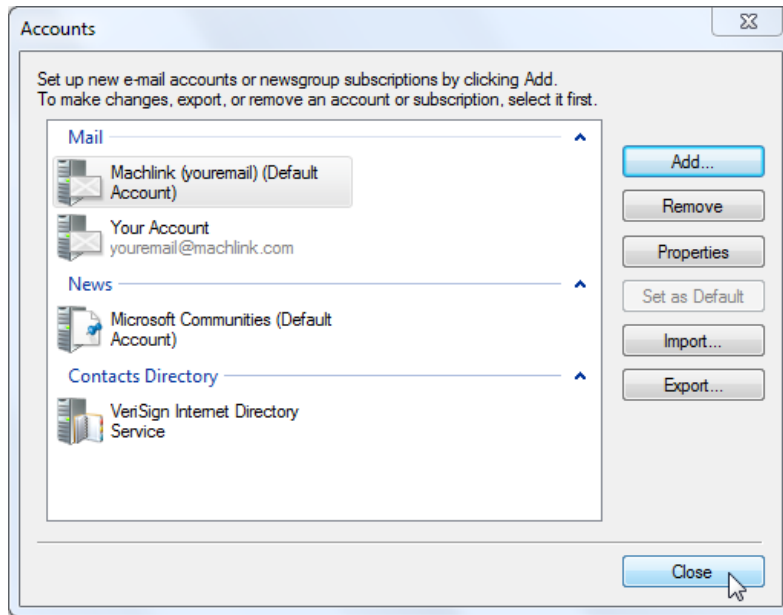
The screenshot shows the 'Add an E-mail Account' dialog box. It has a title bar with a back arrow and a close button. Below the title bar is a link: 'Where can I find my e-mail server information?'. The dialog is divided into two sections: 'Incoming Server Information' and 'Outgoing Server Information'. In the 'Incoming Server Information' section, there is a dropdown menu for 'My incoming mail server is a' set to 'IMAP', a text field for 'Incoming server' containing 'mra.machlink.com', and a 'Port' field set to '143'. There is an unchecked checkbox for 'This server requires a secure connection (SSL)'. The 'Log on using:' dropdown is set to 'Clear text authentication'. The 'Login ID (if different from e-mail address):' text field contains 'youremail'. In the 'Outgoing Server Information' section, the 'Outgoing server:' text field contains 'mail.machlink.com' and the 'Port:' field is set to '25'. There is an unchecked checkbox for 'This server requires a secure connection (SSL)' and a checked checkbox for 'My outgoing server requires authentication'. At the bottom right, there are 'Next' and 'Cancel' buttons.

8. Place a checkmark beside **Set this account as the default mail account**, then click **Finish**

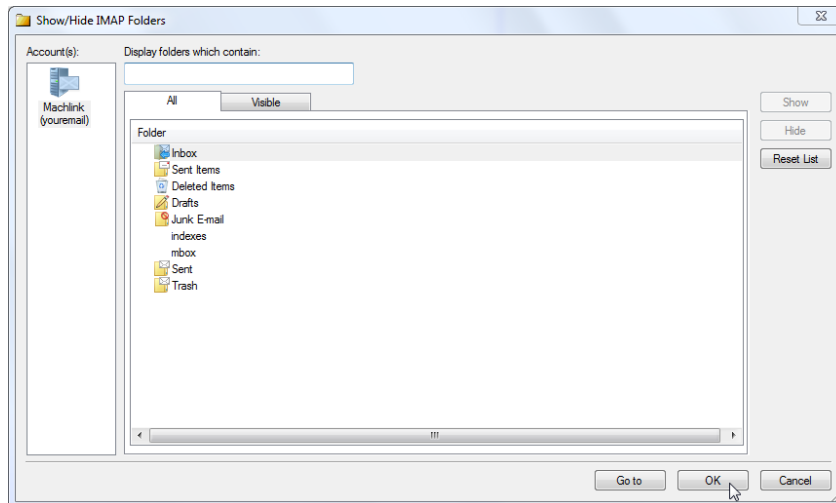


The screenshot shows the 'Add an E-mail Account' dialog box at the confirmation stage. The title bar is the same. The main area contains the text: 'You have successfully entered in the information required to set up your account.' Below this text is a checked checkbox for 'Set this account as the default mail account.' At the bottom right, there are 'Finish' and 'Cancel' buttons.

9. Click **Close**



10. Click **OK**



11. You are now finished and will be taken back to the main mail window.