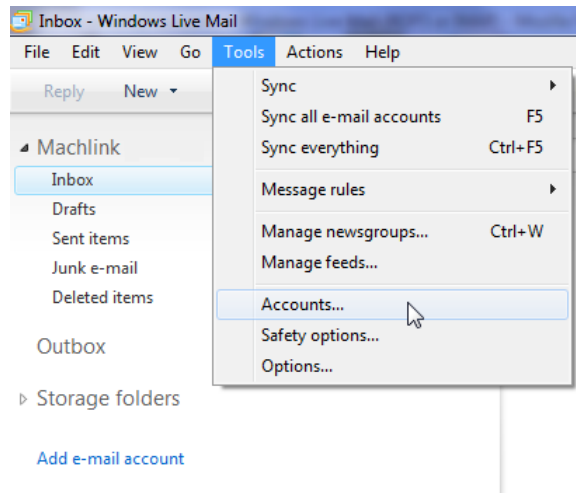
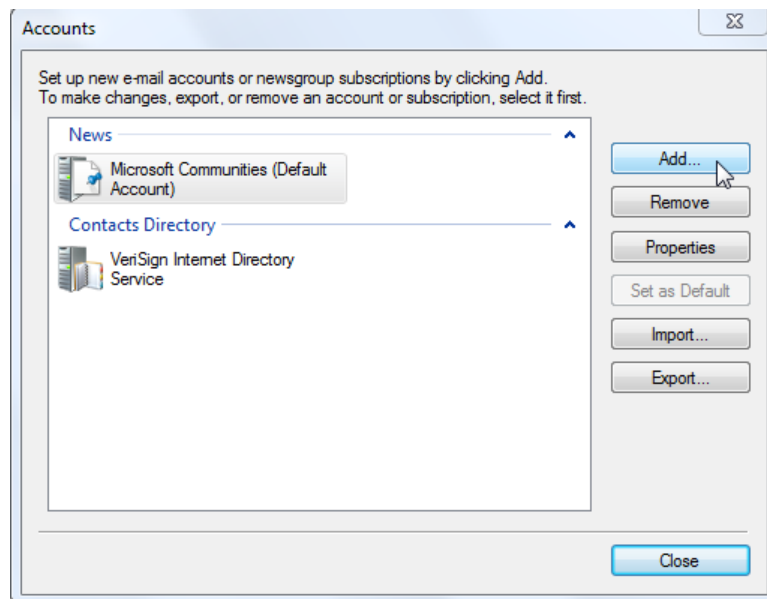


Windows Live Mail IMAP Setup

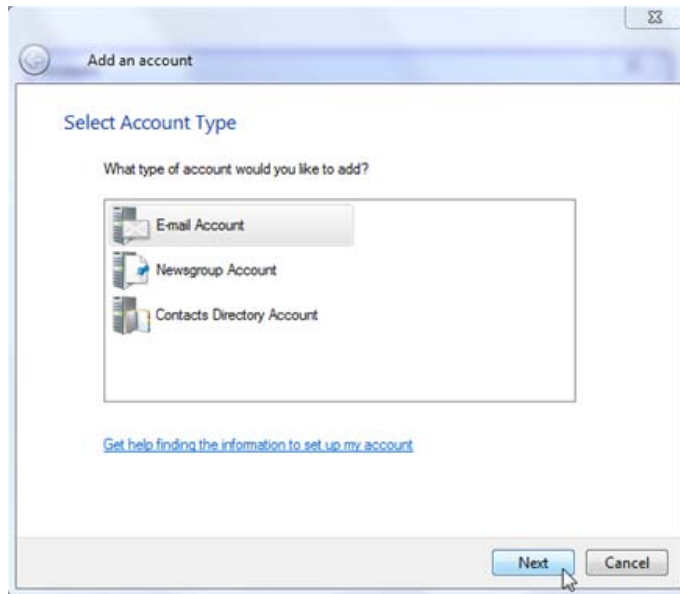
1. From the **Tools** menu, select **Accounts**.



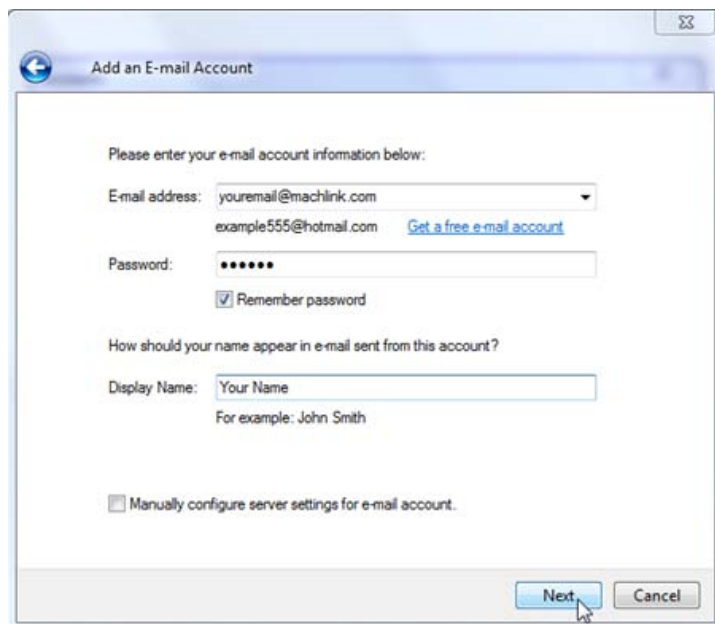
2. Click **Add...**



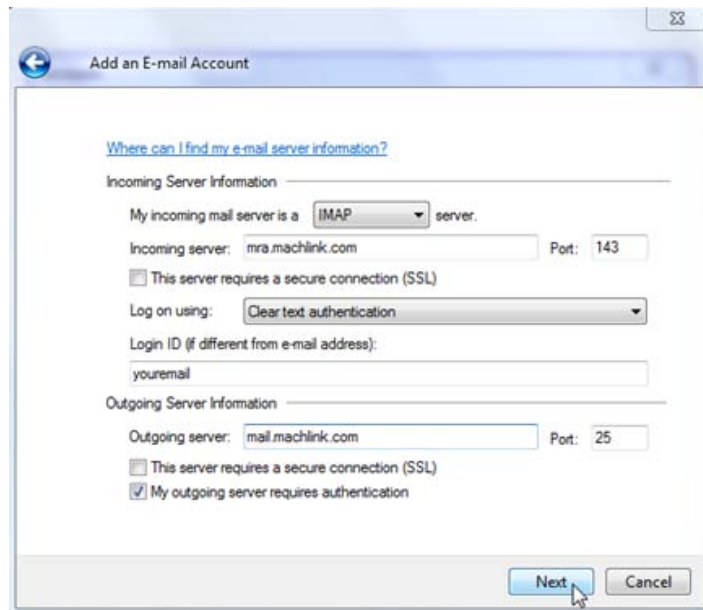
3. Highlight **E-mail Account** and click **Next**.



4. Enter your **E-mail address**, **Password**, and your **Display Name** (as you would like to appear in your email), then click **Next**.

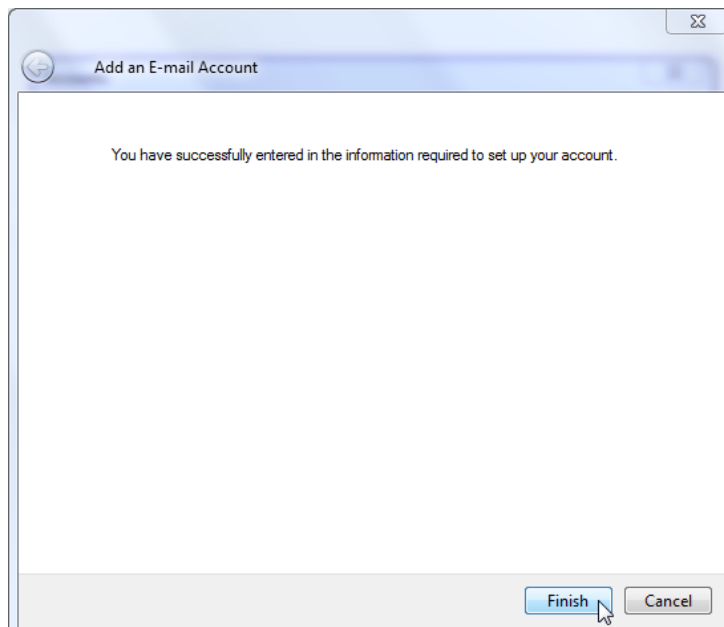


5. Enter Server Information as shown below:
 - a. **Incoming email server type:** IMAP
 - b. **Incoming server:** mra.machlink.com
 - c. **Outgoing server:** mail.machlink.com
 - d. Place a checkmark beside **My Outgoing server requires authentication**
 - e. Click **Next**



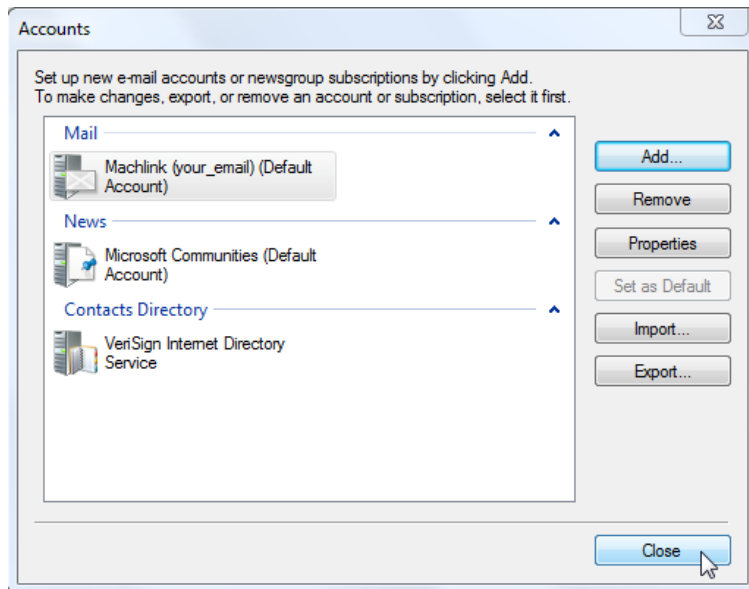
The screenshot shows the 'Add an E-mail Account' dialog box. The title bar reads 'Add an E-mail Account'. Below the title bar is a link: 'Where can I find my e-mail server information?'. The 'Incoming Server Information' section includes: 'My incoming mail server is a IMAP server.', 'Incoming server: mra.machlink.com', 'Port: 143', an unchecked checkbox for 'This server requires a secure connection (SSL)', 'Log on using: Clear text authentication', and 'Login ID (if different from e-mail address): youremail'. The 'Outgoing Server Information' section includes: 'Outgoing server: mail.machlink.com', 'Port: 25', an unchecked checkbox for 'This server requires a secure connection (SSL)', and a checked checkbox for 'My outgoing server requires authentication'. At the bottom right are 'Next' and 'Cancel' buttons.

6. Click on **Finish**.

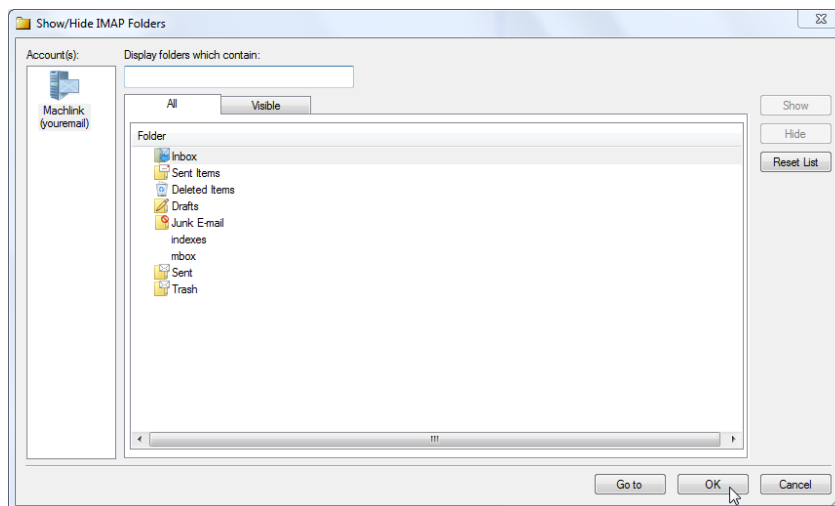


The screenshot shows the 'Add an E-mail Account' dialog box with a success message: 'You have successfully entered in the information required to set up your account.' At the bottom right are 'Finish' and 'Cancel' buttons.

7. Click **Close**.



8. Click **OK**.



9. You are now finished and will be taken back to the main mail window.