



## We're here for you...

We have designed this Quick Start guide so that you can begin enjoying your MachLink® Internet service as quickly as possible. If you are unable to connect to MachLink, call the MachLink® HelpDesk. You will be connected to a specialized technician at our central support desk who can diagnose the problem. You will be asked a series of standard questions that will help the technician pinpoint the problem. The MachLink® HelpDesk can address many of your problems over the telephone. You can also email any questions or issues to MachLink®.

Remember, we're here for you!

### ***MachLink® HelpDesk***

Phone: (563) 263-2631

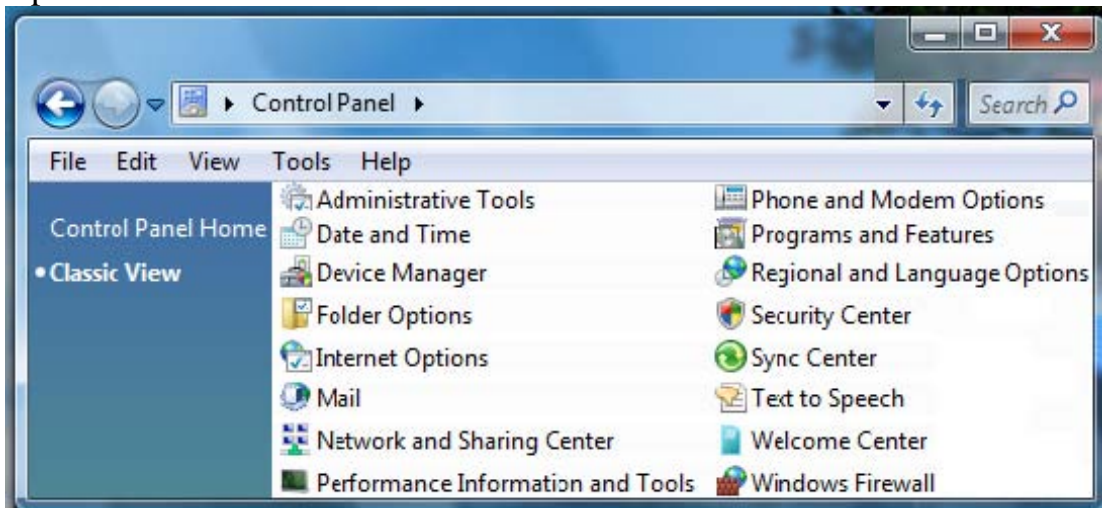
Email: [helpdesk@machlink.com](mailto:helpdesk@machlink.com)

## Creating a New Connection (Dialup)

### Creating a New Connection Using the Wizard

The Set up a Connection or Network Wizard may start automatically when setting up your computer. If it does, skip to the *In the Connection Wizard* section...

1. Open the *Control Panel*.

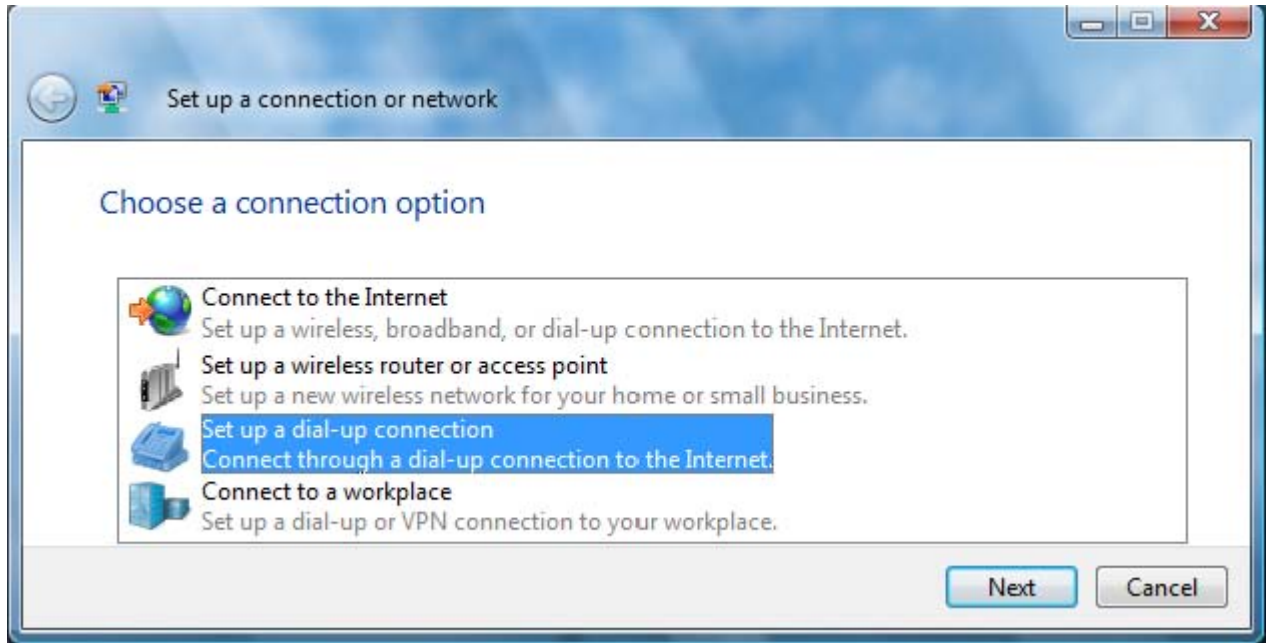


2. From the upper-left corner of the *Control Panel*, select Classic View.
3. Choose Network and Sharing Center.

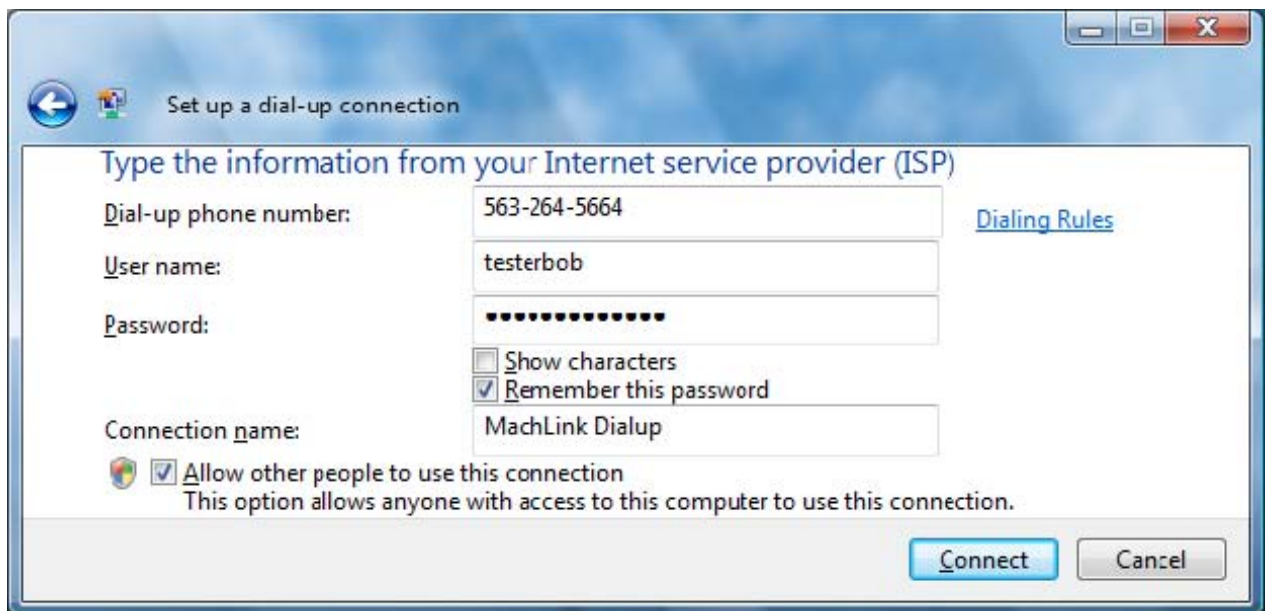
- Next, choose **Set up a Connection or Network** from the left-side tasks panel.

### **In the Connection Wizard**

- On the *Set up a connection or network* page, select **Set up a dial-up connection** (see below) and click on **Next**.



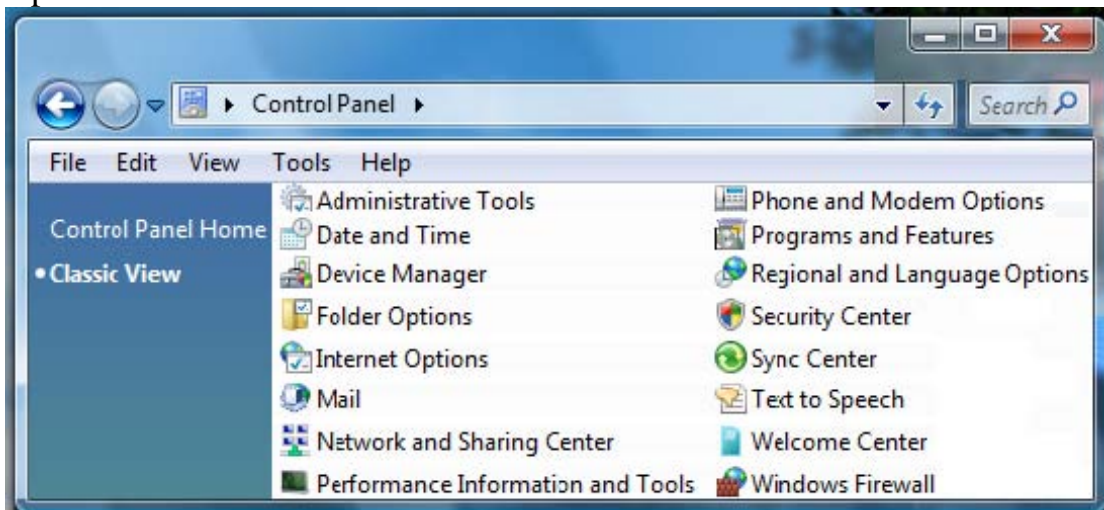
- On the *Set up a dial-up connection* page, enter 563-264-5664 for your *Dial-up phone number*.



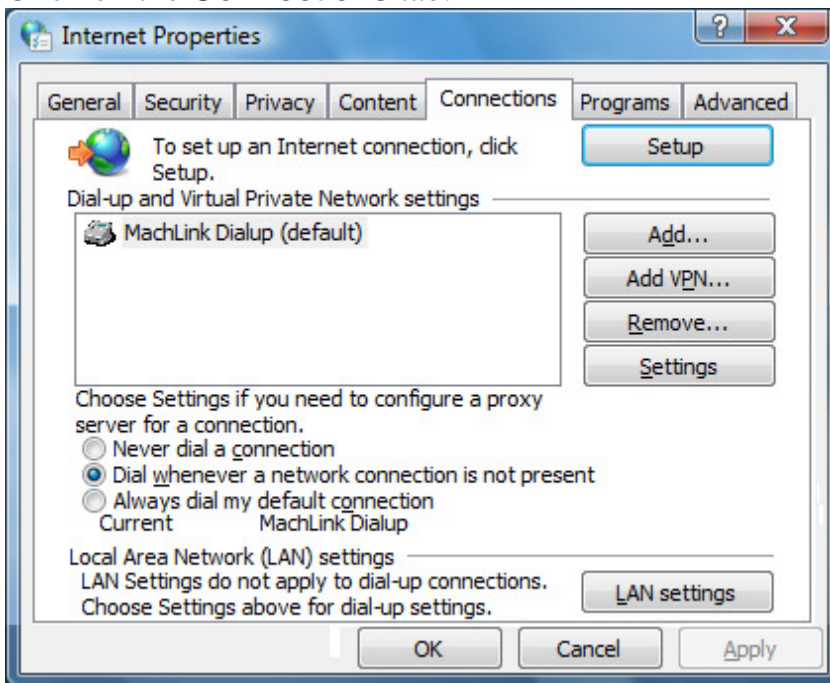
- Next, enter your dialup *User name* and *Password*.
- Now, enter MachLink for your *Connection name*.
- Next, make sure that **Remember this password** and **Allow other people to use this connection** are checked.
- Click on **Connect**.

## Last Steps

1. Open the *Control Panel*.



2. From the upper-left corner of the *Control Panel*, select Classic View.
3. Choose Internet Options.
4. Click on the Connections tab.



5. Make sure that Dial whenever a network connection is not present has the filled-in circle to the left of it (as in example, above).
6. Next, click on OK.  
Now you don't need to manually dial in. Just open up anything that needs the Internet connection - Internet Explorer, Windows Mail, etc - and your computer will automatically dial out!