



# QUICK START GUIDE

Need help? Contact our Helpdesk at (563) 263-2631

## We're here for you...

We have designed this Quick Start guide so that you can begin enjoying your MachLink® Internet service as quickly as possible. If you are unable to connect to MachLink, call the MachLink® HelpDesk. You will be connected to a specialized technician at our central support desk who can diagnose the problem. You will be asked a series of standard questions that will help the technician pinpoint the problem. The MachLink® HelpDesk can address many of your problems over the telephone. You can also email any questions or issues to MachLink®.

Remember, we're here for you!

### ***MachLink® HelpDesk***

Phone: (563) 263-2631

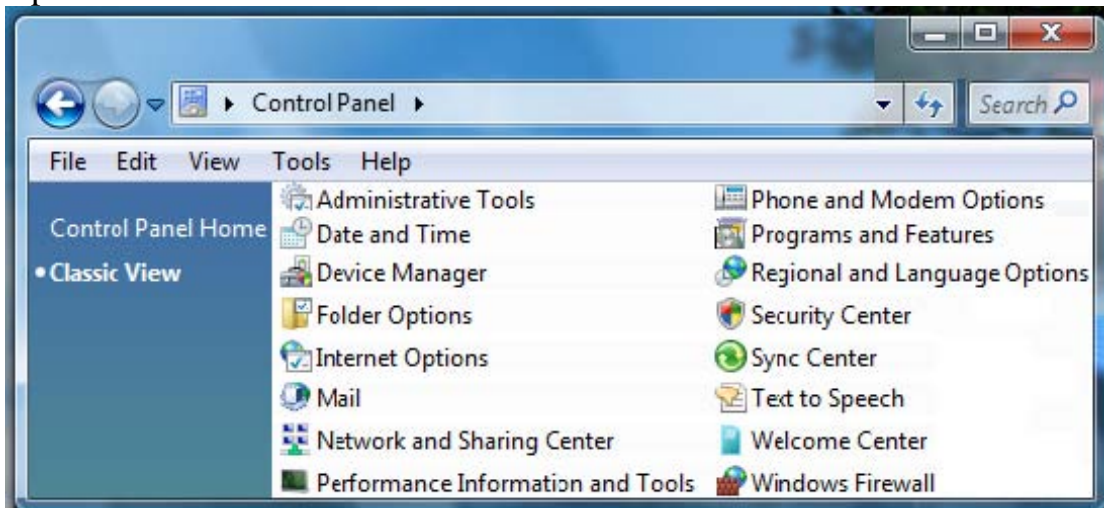
Email: [helpdesk@machlink.com](mailto:helpdesk@machlink.com)

## Creating a New Connection (Broadband Cable/DSL Modem)

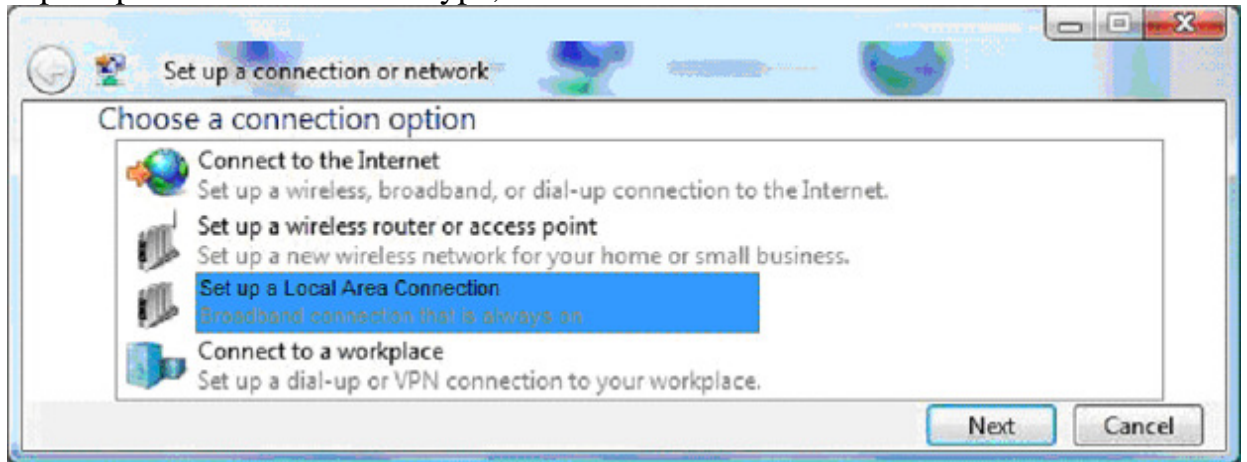
### Creating a New Connection Using the Wizard

The Set up a Connection or Network Wizard may start automatically when setting up your computer. If it does, skip to the *In the Connection Wizard* section...

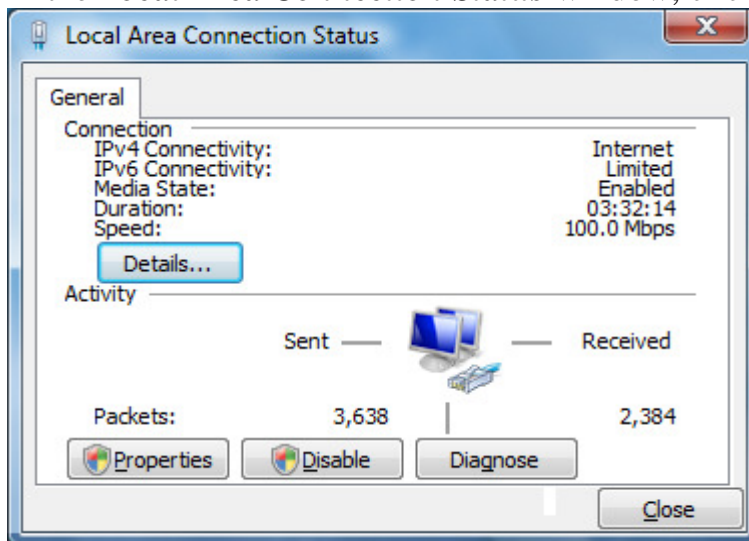
1. Open the *Control Panel*.



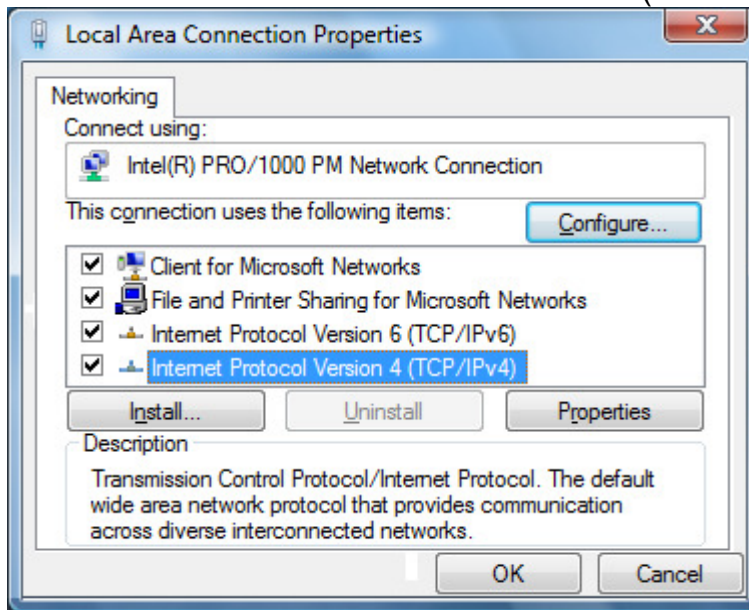
2. From the upper-left corner of the *Control Panel*, select Classic View.
3. Choose Network and Sharing Center.
4. Next, choose Set up a Connection or Network from the left-side tasks panel.
5. If prompted for a connection type, choose Local Area Connection.



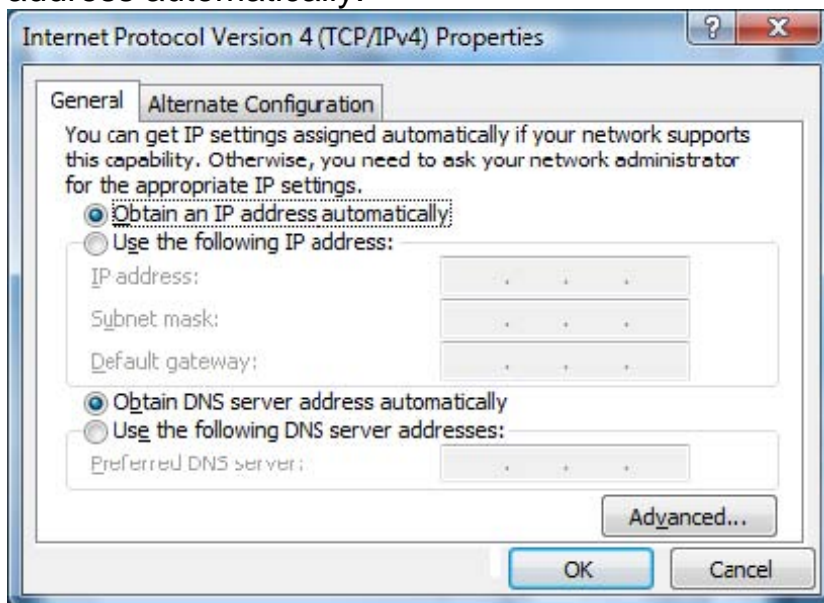
6. Double-click the Local Area Connection to open the *Local Area Connection Status* window (see below).
7. In the *Local Area Connection Status* window, click on Properties.



8. Double-click Internet Protocol Version 4 (TCP/IPv4).



9. Select Obtain an IP address automatically and Obtain DNS server address automatically.



10. Click on **OK** to close the *IPv4 Properties* window.
11. Click on **OK** to close the *Local Area Connection Properties* window.
12. Click on **Close** to close the *Local Area Connection Status* window.
13. Close the *Control Panel* window.
14. Restart the computer.